

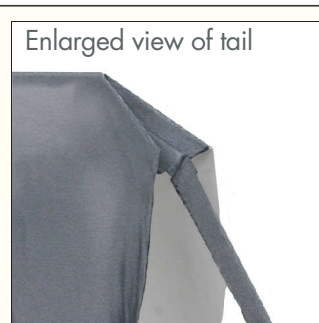
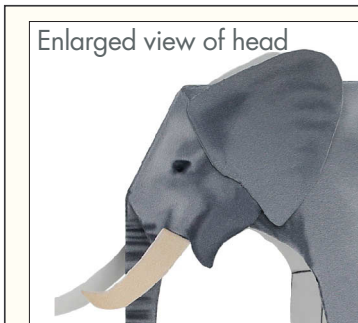
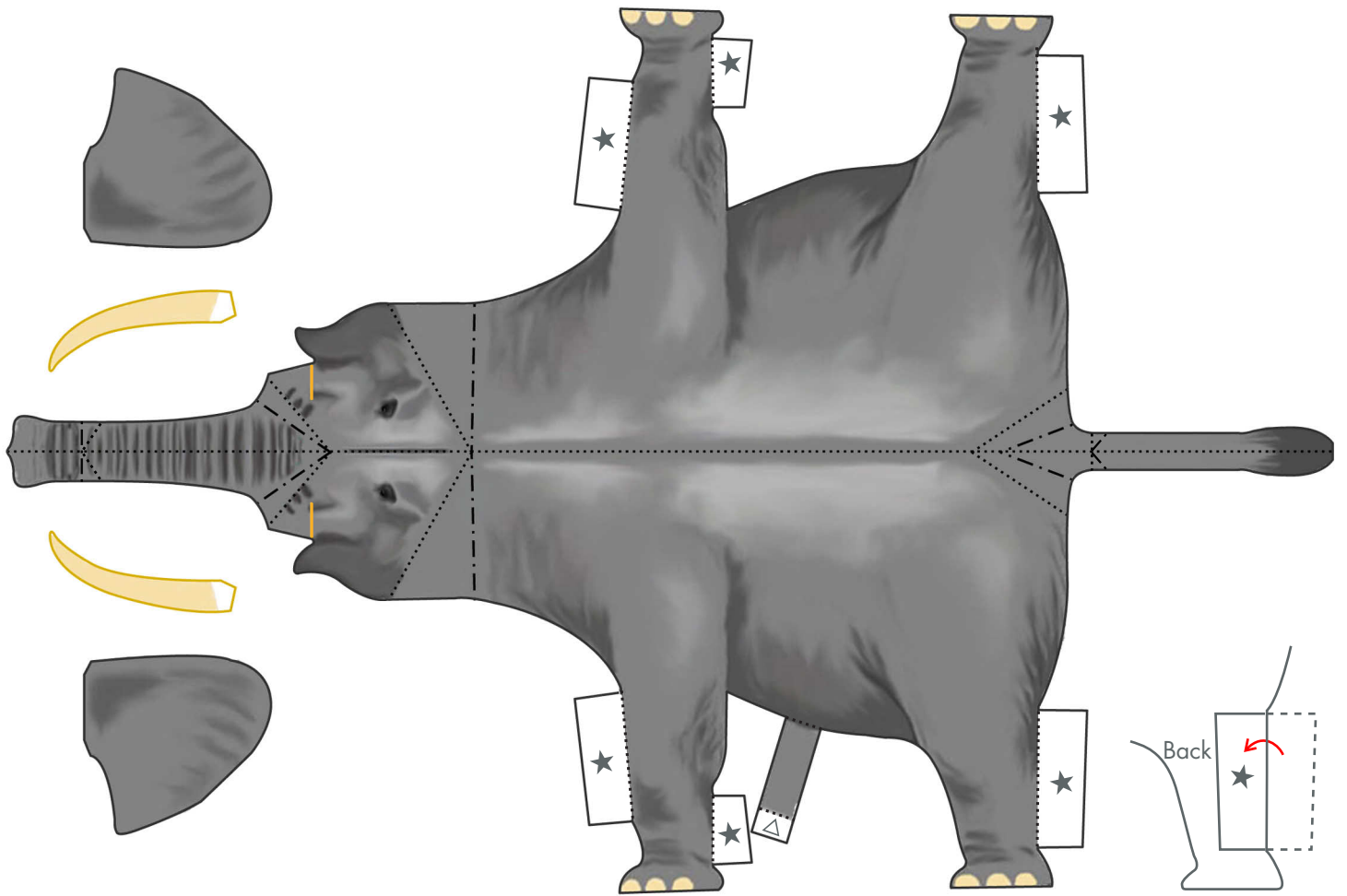
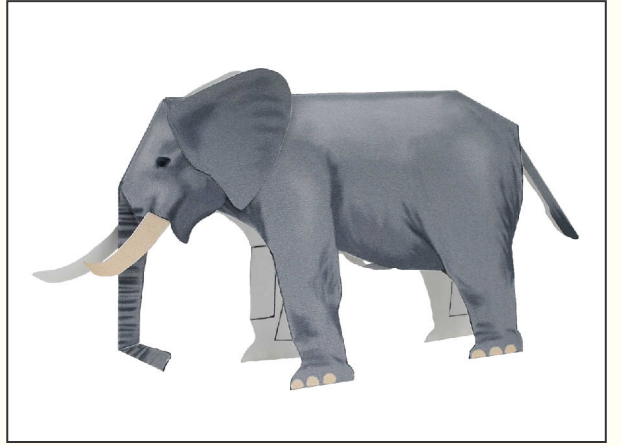
PAPER CRAFT

<http://www.canon.com/c-park/en/>

African Elephant

Habitat: African continent, south of the Sahara

Remarks: Length (incl. tail) approx. 6 to 7m (approx. 20 to 23 feet)
 Height approx. 3 to 3.35m (approx. 10 to 12 feet)
 Weight approx. 5,000 to 7,000kg (approx. 11,000 to 15,400lbs)
 The world's largest land dwelling animal.



«Assembly Instructions»

- ★ mark
Fold and paste on for extra strength.
- △ mark
Paste on to reverse side after completion.

Paste the tusks into the back of the cutaways.

- Scissors line
- Cut in line
- - - Mountain fold
- · - · Valley fold